



Penarth Group School
Positively Growing Success

Prospectus



To Educate in a Creative, Nurturing and Safe Environment.

www.penarthgroupschool.co.uk

Welcome to Penarth Group School

The choice about which school to send your child to is an extremely important one for any parent or carer. We hope that this prospectus will give you lots of interesting and useful information about why Penarth Group School could be the right place.

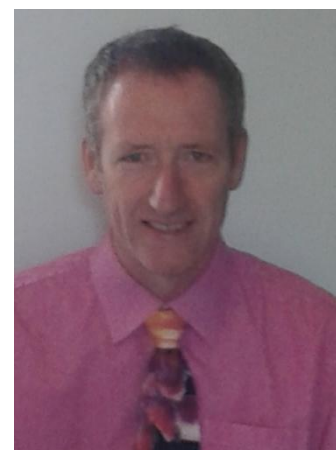


Our aim is to support all the young people in our care to fulfil their aspirations, develop their independence and equip them with the skills and qualifications needed to help them achieve their goals, now and in the future. We recognise that all young people have individual needs, and we endeavour to tailor our provision to meet need in a holistic way.

Students receive support from a range of specialist staff, we also offer a wide range of academic and vocational courses and experiences to meet students' individual needs and interests.

Through our parent company, Penarth Group, we can offer residential placements to accommodate students who may live a long way from school, or for whom the transition of travel is difficult. Residence is an excellent way to develop additional independent living skills, try out new activities, form lifelong friendships and have lots of fun.

The only way to be sure about which school is right for your child is to visit and decide for yourself. Please contact the school and speak to any member of staff who will be pleased to arrange a visit and answer any questions you may have.



Stephen Watson –
Headteacher

"The curriculum is broad and balanced, fostering pupils' spiritual, moral, social and cultural development effectively. Pupils make rapid gains in their personal development. Relationships between the pupils and their teachers are characteristically warm and friendly. Pupils feel safe, well cared for and valued."

- Ofsted

MISSION STATEMENT

'To educate in a creative, nurturing and safe environment.'

At **Penarth Group School** we believe every child has an entitlement to a broad balanced and creative curriculum. This should be engaging, meaningful and relevant, within an environment which is safe, nurturing, collaborative and respectful.

Through an innovative and reflective approach we will aim to build **successful learners** who enjoy learning, make progress and achieve.

We will aim to nurture **confident individuals** and **responsible citizens** who lead safe and happy lives and who will make a **positive contribution** to society.

THE SCHOOL



Our Vision Statement

- We discover and realise the genius in everyone
- We learn about and respect the people with whom we share our world
- We constantly develop and acquire the skills needed to achieve personal success
- We build up our confidence in ourselves
- We learn to treat and respect others the way we like to be treated

Our Aims

- To create a stimulating environment that reflects our values and promotes a sense of self worth and community.
- To build strong collaborative partnerships with families and the local community.
- To provide a broad, balanced and creative curriculum that combines excellence in teaching with enjoyment of learning.
- To recognise and plan for a range of learning styles and interests, to ensure all children have equal access to the curriculum enabling them to reach their full potential.
- To promote life-long learning through high quality continual professional development for all staff and by developing a learning culture throughout the school.
- To promote social, cultural, moral and spiritual development, supporting pupils and staff to become confident and responsible members of society.
- To establish an atmosphere in which each child has a positive self-image and where individual achievements are valued by all.
- To include all members of the school community in the process of school improvement and self evaluation.

Values-Based Education

Penarth Group School provides a Values-based Curriculum. This means that we promote and teach a set of values to our pupils that will ensure they develop the skills to be good citizens in the future. We support our curriculum with a set of principles (values) that are woven into teaching and learning in order to develop improved social and emotional skills that will positively affect behaviour. Teaching children values improves pupils' self-esteem, improves their behaviour and raises standards of learning even higher.

There are 11 values that we consider to be universal:

- | | |
|------------------|--------------|
| ▪ Co-operation | ▪ Love |
| ▪ Responsibility | ▪ Tolerance |
| ▪ Freedom | ▪ Honesty |
| ▪ Democracy | ▪ Simplicity |
| ▪ Peace | ▪ Humility |
| ▪ Respect | |

AIMS

1. To provide a safe, secure, positive and supportive environment which is caring, consistent and fair, irrespective of gender, disability and background.
2. To develop the pupil's self respect, self confidence and self reliance with a sense of loyalty and honesty; have the ability to form positive personal relationships in order to live and work with sensitivity and mutual respect.
3. To develop lively enquiring minds with the ability to question and reason, acquire knowledge, creative and practical skills, developing these skills to the highest potential for each pupil.
4. To be guided by the requirements of the National Curriculum.
5. To support pupils in acquiring the knowledge, skills and understanding relevant to adult life and employment/further education.

THE CURRICULUM

Students arrive at Penarth Group School with a history of disrupted schooling. The school seeks to re-establish the concept of learning as a positive and enjoyable experience and ensure that each pupil reaches their true potential.

The Curriculum provided is broad based to ensure that each pupil takes part in wide range of subjects, which are differentiated to meet individual need. We aim to introduce pupils to a wide range of knowledge, skills and experience, through ASDAN and AQA assessments and awards and GCSE where appropriate.

The curriculum emphasises the need to acquire basic skills in literacy and numeracy .Schemes of work are carefully planned to ensure work is completed at a level appropriate to the pupil's ability.

The Curriculum includes:

English

Maths

Science

Humanities

Art and Craft

Music

Food Technology

Citizenship/ PHSE

Physical Education

Life Skills

Independent Living Skills

Outdoor Education

In addition to this pupils are also able to access work experience, building links within the community and voluntary work. Planning in all subject areas closely mirrors the guidelines issued in the National Curriculum programmes of study, at an appropriate ability level.



INDIVIDUAL EDUCATION & BEHAVIOUR PLANS

Work is carefully differentiated in order to meet the individual needs of children and regular assessment ensures continuity and progression. Each child/ young person has individually tailored positive expectations for achievement. This ensures they are challenged appropriately and experience success frequently.

Termly targets for literacy and numeracy skills are set through IEP reviews and progress is assessed carefully and frequently. The remediation of learning difficulties, whatever the cause, is facilitated by a supportive educational programme and intensive individual help.

Individual behaviour targets are discussed with the child/young person on a daily basis and are monitored, reviewed and revised regularly.

All pupils have annual reviews where a detailed report is produced assessing attitude, attainment and progress.

SCHOOL UNIFORM

Pupils are expected to wear the following school uniform. There is no preferred supplier so items can be sourced from any high street retailers.

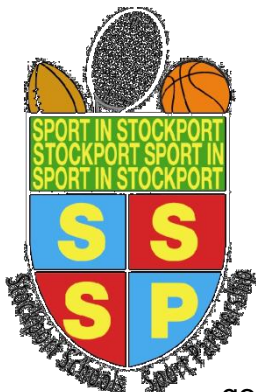
Girls

Black skirt/trousers
White polo shirt
Black sweatshirt
Black shoes

Boys

Black trousers
White polo shirt
Black sweatshirt
Black shoes

Physical Education



The school is a member of Stockport School's Sport Partnership. There are sport sessions every Monday afternoon. Young people should provide their own kit for participating in these sessions: –

T shirt Shorts/tracksuit bottoms Trainers

Swimming may also take place and young people should bring appropriate equipment – costume, towel, and goggles if required.

OUTDOOR EDUCATION

We aim to offer all pupils a rounded curriculum in which, irrespective of academic ability, they can achieve high levels of success. In response to this we offer a variety of outdoor education activities, including map work, orienteering, walking, cycling, problem solving, climbing and canoeing.



All activities place a great emphasis on teamwork and the development of positive self awareness, confidence and cooperative behaviours amongst our young people.

CAREERS GUIDANCE / F.E.

Penarth Group School has developed positive links with the local Services for Students team and will organise careers meetings and interviews for all KS4 students.

Penarth Group also co-ordinates and monitors work experience placements for Key Stage 4 students, giving those students an invaluable insight into working life.

We have also developed positive links with colleges in and around the local area and have supported students in being successfully placed on post-16 further education courses.

It is our aim to support all of our students in achieving a positive work or college placement at the end of Year 11.

CHILD PROTECTION

Penarth Group School has a comprehensive child protection policy and will take any reasonable steps to ensure the safety of its pupils. In cases where the school has reason to be concerned that a child may be subject to ill treatment, neglect or other forms of abuse, staff will follow Stockport LEA's child protection procedures and inform both Penarth Group School's company directors, Ofsted and the Safeguarding Team of the concern.

The child protection policy is kept on school premises at all times and is available to all to see.

BEHAVIOUR MANAGEMENT PROGRAMME

At Penarth Group School we aim to overcome the previous negative experiences our students have had of education and eliminate the negative images they have both of the school environment and of themselves as learners.

We operate a clear behaviour management reward system that enables students to achieve a range of rewards for meeting their individual behaviour target including: praise, gaining credits for activities and making positive phone calls to parent/carers. In addition to this we also operate a range of sanctions which include losing credits, withdrawal from the class group for 1-1 teaching and behaviour planning meetings with parents and carers.

Our behaviour management system uses the student's Individual Education Plan as a basis for setting a daily behaviour target. The recording and monitoring of pupil's behaviour is via an individual target sheet which is completed with each student at the end of every lesson and then reviewed during Tutor Time. This target sheet is available for carers/parents /SSD on request. Parents/Carers may also request to be given daily updates as to pupils' behaviour via a Home-School Communication book or via telephone, if either is required.

ADMISSIONS CRITERIA AND PROCEDURES

ADMISSIONS CRITERIA:

Pupils will either be unable to maintain a place in a mainstream school or be thought to be able to benefit from a stable period in a small supportive school environment. The pupil will be considered to be S.E.N., M.L.D. or S.E.B.D. and between the ages of 8 and 16 years.

ADMISSIONS PROCEDURES:

When a placement is requested, a copy of the child/young persons Education and Healthcare Plan (EHC) and/or other relevant documents, such as previous school reports, I.E.P's etc., will be needed. This is in order to ascertain the suitability of the placement and to set up an education programme appropriate to the child/young person's needs. A planning meeting will then be held to determine if the placement is appropriate to the child's needs.

HEALTH AND SAFETY

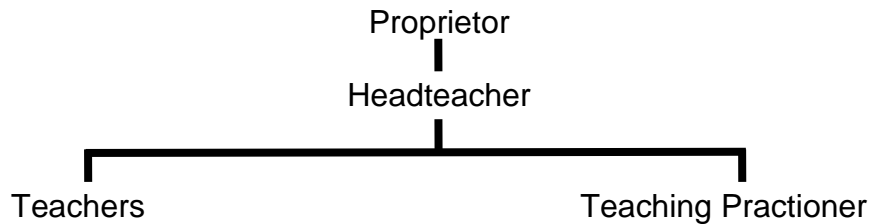
Penarth Group School (as part of Penarth Group) has a comprehensive Health and Safety policy and procedures and is inspected by Croner Consultants (08707479000). The Policy/Procedures file is kept on school premises and is available to anyone at all times.

VISITING THE SCHOOL

Penarth Group School is happy to welcome visitors and anyone interested in placing a child at Penarth is encouraged to make an appointment to visit the school.

Representatives from the L.E.A. and S.S.D are also encouraged to visit.

STAFF STRUCTURE



STAFF LIST

Proprietor	Mrs Patricia Swallow
Headteacher	Mr Stephen Watson
Lead Teacher	Mrs Claire Glover
Teaching Practitioner with TLR	Mr Matthew Davies Mrs Carol Nolan Mr Darren Poyzer (part time)

The School Day

9.00am - 9.30am	Breakfast Club/Tutor time
9.30am – 10.20am	Lesson 1
10.20am – 11.10am	Lesson 2
11.00am – 11.30am	Break time
11.30am – 12.20pm	Lesson 3
12.20pm – 1.00pm	Lunch time
1.00pm – 1.05pm	Assembly
1.05pm – 1.20pm	Everybody Reads in School
1.20pm – 2.10pm	Lesson 4
2.10pm – 3.00pm	Lesson 5
3.00pm	End of School Day

School provides a small snack at break time. Young people are asked to provide their own packed lunch (no fizzy drinks please).

Young people are NOT allowed to leave the school premises at either break or lunchtime, unless under the direct supervision of a member of staff.



Pupil Absence

Parents/carers are requested to contact school by telephone as soon as possible on the first day of absence, outlining the reason for absence and the expected date of return.

As far as possible Penarth Group School follows Stockport MBC's term dates for secondary schools.

School Year 2017/2018

Autumn Term 2017

- **Term starts:** Monday 4th September
- **Half term holiday:** Monday 23rd to Friday 27th October
- **Term ends:** Tuesday 19th December

Spring Term 2018

- **Term starts:** Wednesday 3rd January
- **Half term holiday:** Monday 19th to Friday 23rd February
- **Term ends:** Thursday 29th March

Summer Term 2018

- **Term starts:** Monday 16th April
- **May Day:** Monday 7th May
- **Half term holiday:** Monday 28th May to Friday 1st June
- **Term ends for secondary:** Tuesday 24th July

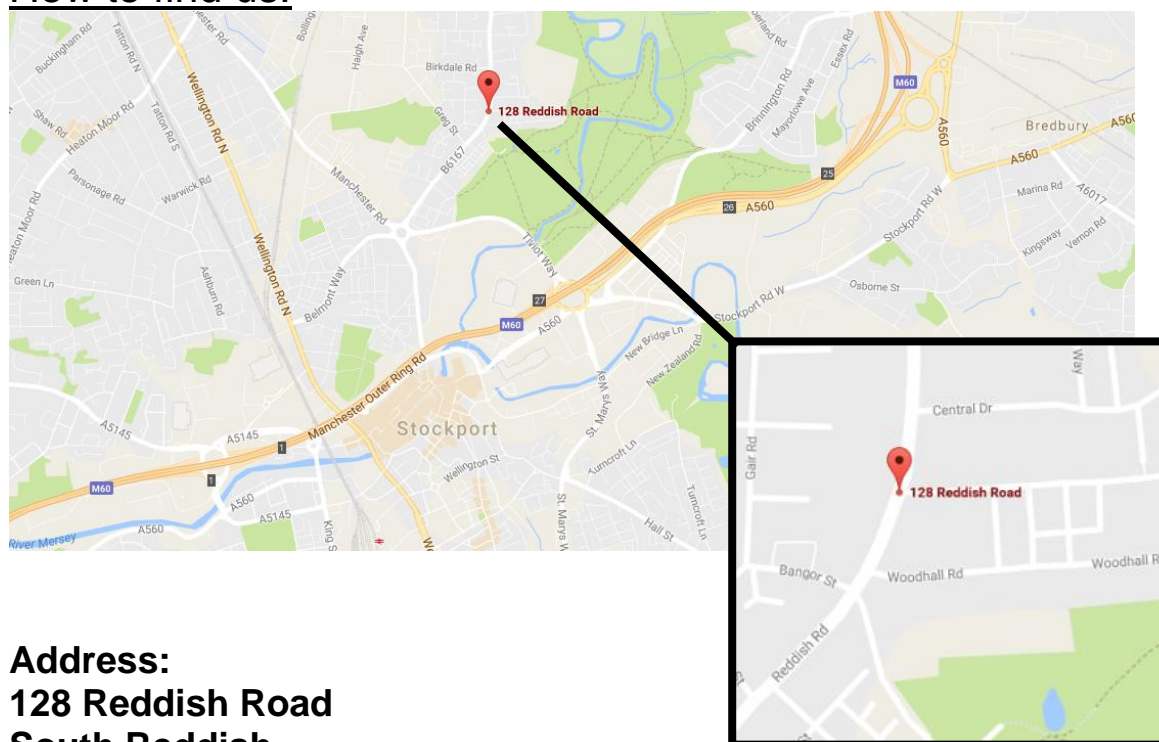
Public Holidays

Good Friday – 30th March 2018
May Day – 7th May 2017

Easter Monday – 2nd April 2018
Spring Bank Holiday - 28th May 2018

INSET Days: -
Five days to be confirmed.

How to find us.



**Address:
128 Reddish Road
South Reddish
Stockport
Cheshire
SK5 7JG**

By Train – the nearest train stations are Stockport and Reddish North

By Bus – the 203 service from Stockport Bus Station have stops close by the school.

By Car – Use the postcode SK5 7JG for your Sat Nav.

Head teacher: Mr Stephen Watson (0161 483 1212)
Email: headteacher@penarthgroup.co.uk

Proprietor/ Mrs Patricia Swallow (0161 406 0244)
Chair of Governors:
Email: pat@penarthgroup.co.uk

D.C.F.S. No: 356/6031

PENARTH GROUP HEAD OFFICE

**97 Higher Bents Lane
Bredbury
Stockport
SK6 2NA**

Tel: 0161 406 0244

Fax: 061 430 7551